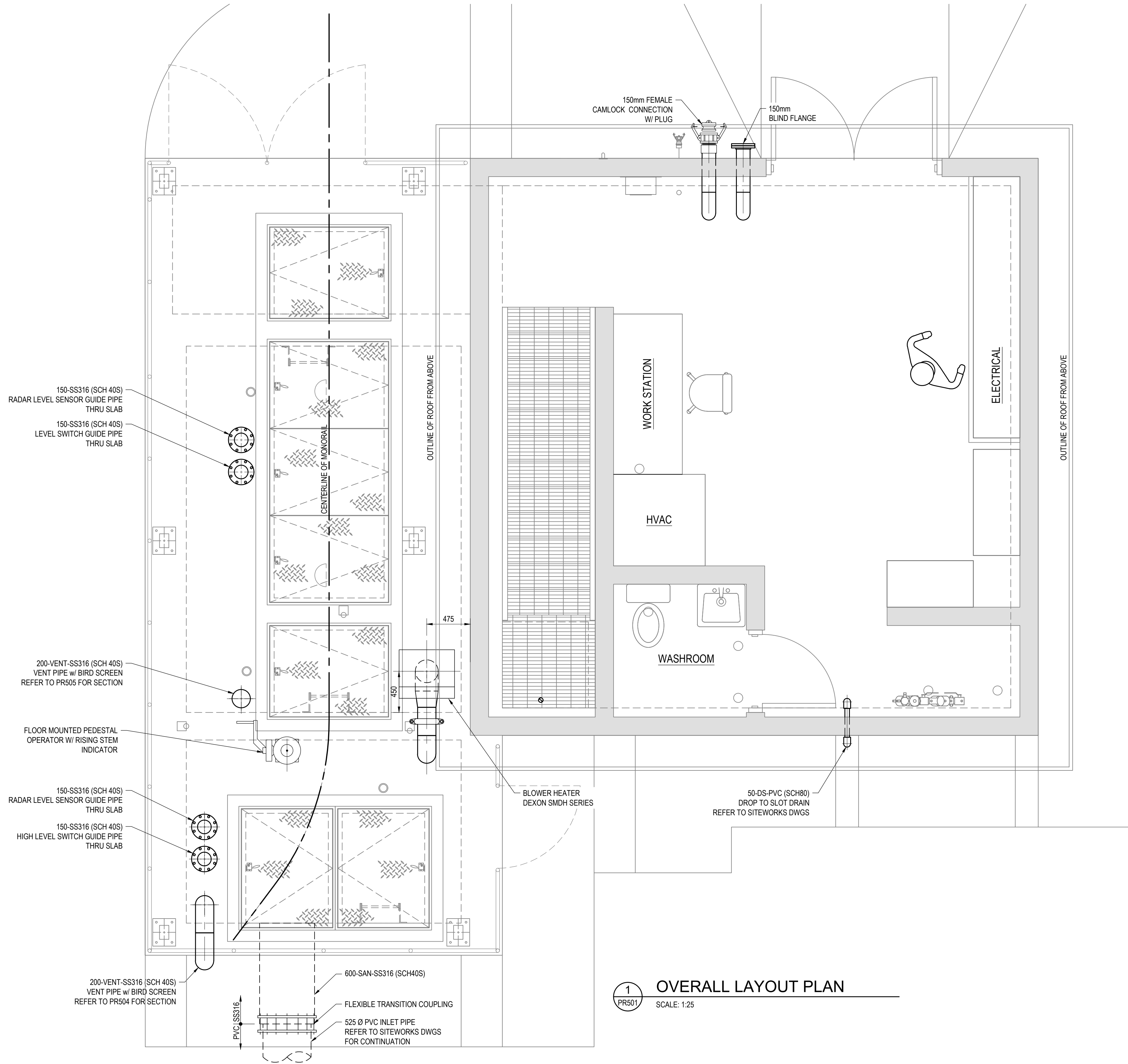


NOTES

1. ALL DRAIN CONNECTIONS ARE TO BE 50MM AND PROVIDED WITH A SS 316 MALE CAMLOCK CONNECTION
2. CONTRACTOR TO SUPPLY ONE 2.5m AND 5.0m LONG DRAIN HOSE WITH COMPATIBLE CAMLOCK FITTING TO CONNECT TO PROCESS PIPING DRAIN CONNECTIONS. CONTRACTOR TO SUPPLY SS WALL BRACKET TO HANG HOSE ON WALL WHEN NOT IN USE, LOCATION OF BRACKET TO BE COORDINATED WITH THE OWNER
3. FLOW METER TO BE A ZERO DISTANCE FLOW METER WITH REMOTE HEAD TO BE MOUNTED BY THE CONTROL PANEL
4. ALL VALVES WITH OPERATOR HIGHER THAN 1.5m ABOVE FINISHED FLOOR SHALL HAVE A CHAIN WHEEL OPERATOR
5. STEM AND OPERATORS FOR KNIFE GATE INSTALLED IN HORIZONTAL PIPING SHALL BE AS PER THE MANUFACTURER'S RECOMMENDATIONS. CONTRACTOR TO CONFIRM PREFERRED ORIENTATION IN SPOOL DRAWING SUBMITTAL. ACCEPTABLE OPTIONS INCLUDES INSTALLED VERTICALLY UP OR DOWN, OR INSTALLED AT A VERTICAL INCLINE OF NOT LESS THAN 30 DEGREES FROM THE HORIZONTAL.

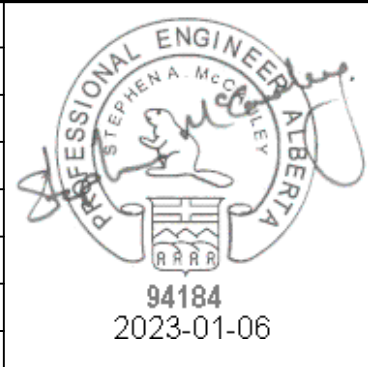


1 OVERALL LAYOUT PLAN
PR501 SCALE: 1:25

NOTE: THIS DRAWING IS
HALF SCALE WHEN PRINTED
TO 11" x 17" FORMAT

FOR APPROVAL

No.	DESCRIPTION	BY	DATE
2	FOR APPROVAL	SM	Jan. 6, 2023
1	FOR APPROVAL	SM	Nov. 23, 2022

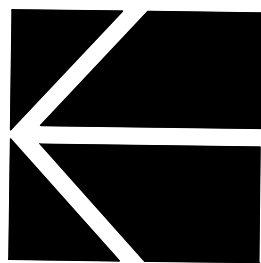


PERMIT TO PRACTICE
ISL Engineering and Land Services Ltd.
RM Signature: *Stephen A. McCreedy*
RM APEGA ID: 94184
Date: 2023-01-06
PERMIT NUMBER: P 4741
The Association of Professional Engineers
and Geoscientists of Alberta

Scale 1:25
0 250 500 750 1000mm
ISL

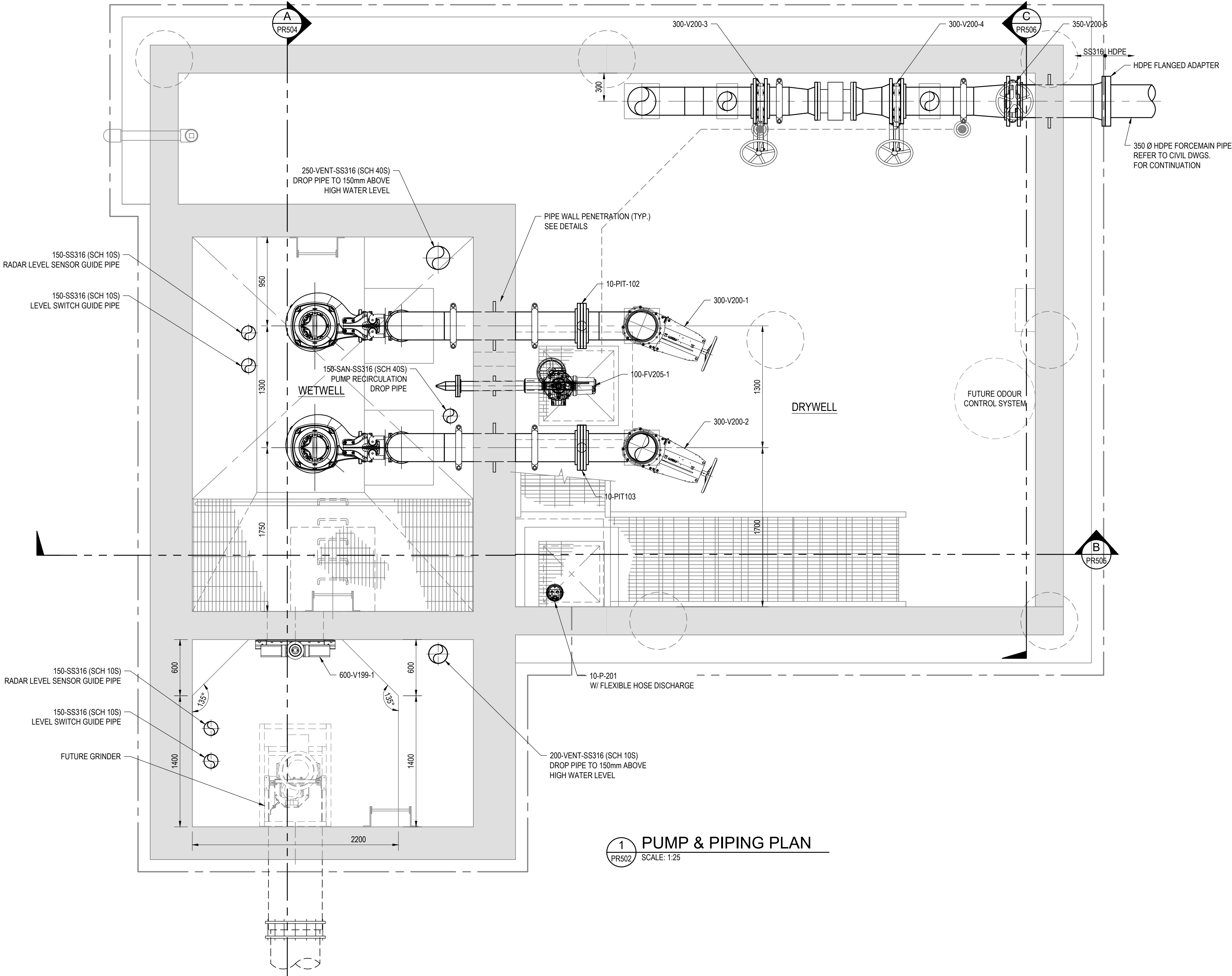
MATTAMY (SHERWOOD PARK) LTD
**HEARTHSTONE SANITARY
LIFT STATION**
Drawn: AL Design Checked: SM Date: Nov. 23, 2022
Designed: SM Discipline Review: JRK Date: Nov. 23, 2022

**PROCESS
MAIN FLOOR PLAN**
Drawing No. 15719
PR 501
Sheet No. 501



NOTES

1. ALL DRAIN CONNECTIONS ARE TO BE 50MM AND PROVIDED WITH A SS 316 MALE CAMLOCK CONNECTION
2. CONTRACTOR TO SUPPLY ONE 2.5m AND 5.0m LONG DRAIN HOSE WITH COMPATIBLE CAMLOCK FITTING TO CONNECT TO PROCESS PIPING DRAIN CONNECTIONS. CONTRACTOR TO SUPPLY SS WALL BRACKET TO HANG HOSE ON WALL WHEN NOT IN USE, LOCATION OF BRACKET TO BE COORDINATED WITH THE OWNER
3. FLOW METER TO BE A ZERO DISTANCE FLOW METER WITH REMOTE HEAD TO BE MOUNTED BY THE CONTROL PANEL
4. ALL VALVES WITH OPERATOR HIGHER THAN 1.5m ABOVE FINISHED FLOOR SHALL HAVE A CHAIN WHEEL OPERATOR
5. STEM AND OPERATORS FOR KNIFE GATE INSTALLED IN HORIZONTAL PIPING SHALL BE AS PER THE MANUFACTURER'S RECOMMENDATIONS. CONTRACTOR TO CONFIRM PREFERRED ORIENTATION IN SPOOL DRAWING SUBMITTAL. ACCEPTABLE OPTIONS INCLUDES INSTALLED VERTICALLY UP OR DOWN, OR INSTALLED AT A VERTICAL INCLINE OF NOT LESS THAN 30 DEGREES FROM THE HORIZONTAL.



1 PUMP & PIPING PLAN
PR502 SCALE: 1:25

NOTE: THIS DRAWING IS
HALF SCALE WHEN PRINTED
TO 11" x 17" FORMAT

FOR APPROVAL

No.	DESCRIPTION	BY	DATE
2	FOR APPROVAL	SM	Jan. 6, 2023
1	FOR APPROVAL	SM	Nov. 23, 2022

REVISIONS

94184
2023-01-06

PERMIT TO PRACTICE
ISL Engineering and Land Services Ltd.
RM Signature: *[Signature]*
RM APEGA ID: 94184
Date: 2023-01-06
PERMIT NUMBER: P 4741
The Association of Professional Engineers
and Geoscientists of Alberta

Scale

0 250 500 750 1000mm

1:25

ISL

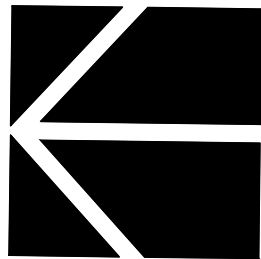
MATTAMY (SHERWOOD PARK) LTD

HEARTHSTONE SANITARY
LIFT STATION

Drawn: AL	Design Checked: SM	Date: Nov. 23, 2022
Designed: SM	Discipline Review: JRK	Date: Nov. 23, 2022

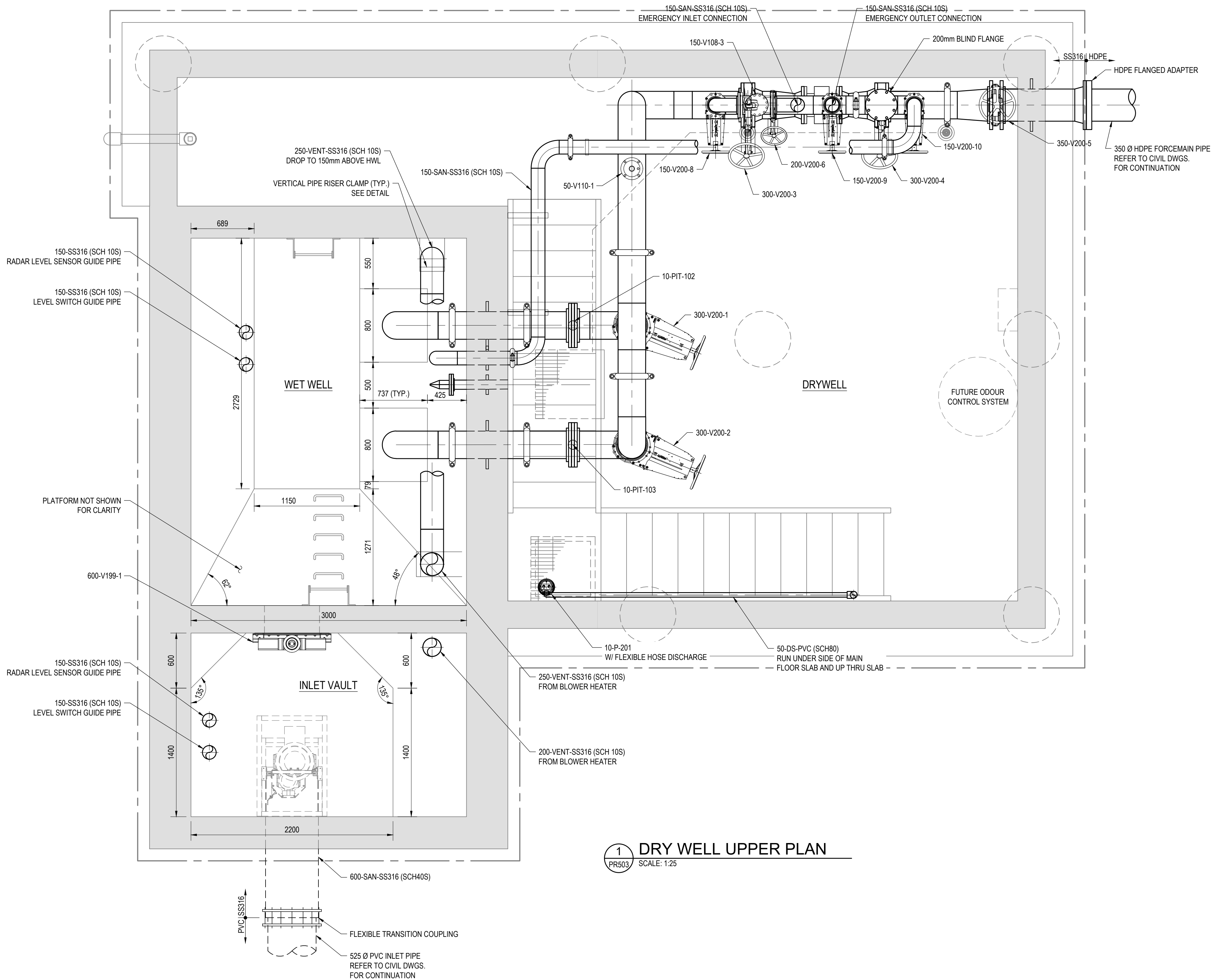
PROCESS
PUMP & PIPING PLAN

Drawing No.
15719
PR
502
Sheet No.
502



NOTES

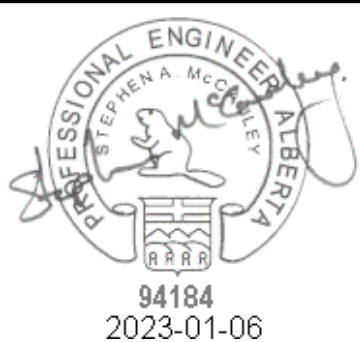
1. ALL DRAIN CONNECTIONS ARE TO BE 50mm AND PROVIDED WITH A SS 316 MALE CAMLOCK CONNECTION
2. CONTRACTOR TO SUPPLY ONE 2.5m AND 5.0m LONG DRAIN HOSE WITH COMPATIBLE CAMLOCK FITTING TO CONNECT TO PROCESS PIPING DRAIN CONNECTIONS. CONTRACTOR TO SUPPLY SS WALL BRACKET TO HANG HOSE ON WALL WHEN NOT IN USE, LOCATION OF BRACKET TO BE COORDINATED WITH THE OWNER
3. FLOW METER TO BE A ZERO DISTANCE FLOW METER WITH REMOTE HEAD TO BE MOUNTED BY THE CONTROL PANEL
4. ALL VALVES WITH OPERATOR HIGHER THAN 1.5m ABOVE FINISHED FLOOR SHALL HAVE A CHAIN WHEEL OPERATOR
5. STEM AND OPERATORS FOR KNIFE GATE INSTALLED IN HORIZONTAL PIPING SHALL BE AS PER THE MANUFACTURER'S RECOMMENDATIONS. CONTRACTOR TO CONFIRM PREFERRED ORIENTATION IN SPOOL DRAWING SUBMITTAL. ACCEPTABLE OPTIONS INCLUDES INSTALLED VERTICALLY UP OR DOWN, OR INSTALLED AT A VERTICAL INCLINE OF NOT LESS THAN 30 DEGREES FROM THE HORIZONTAL.



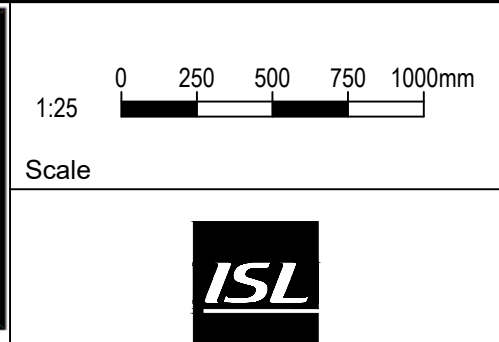
NOTE: THIS DRAWING IS
HALF SCALE WHEN PRINTED
TO 11" x 17" FORMAT

FOR APPROVAL

No.	DESCRIPTION	BY	DATE
2	FOR APPROVAL	SM	Jan. 6, 2023
1	FOR APPROVAL	SM	Nov. 23, 2022



PERMIT TO PRACTICE
ISL Engineering and Land Services Ltd.
RM Signature: *Stephen A. McCreedy*
RM APEGA ID: 94184
Date: 2023-01-06
PERMIT NUMBER: P 4741
The Association of Professional Engineers
and Geoscientists of Alberta



MATTAMY (SHERWOOD PARK) LTD

**HEARTHSTONE SANITARY
LIFT STATION**

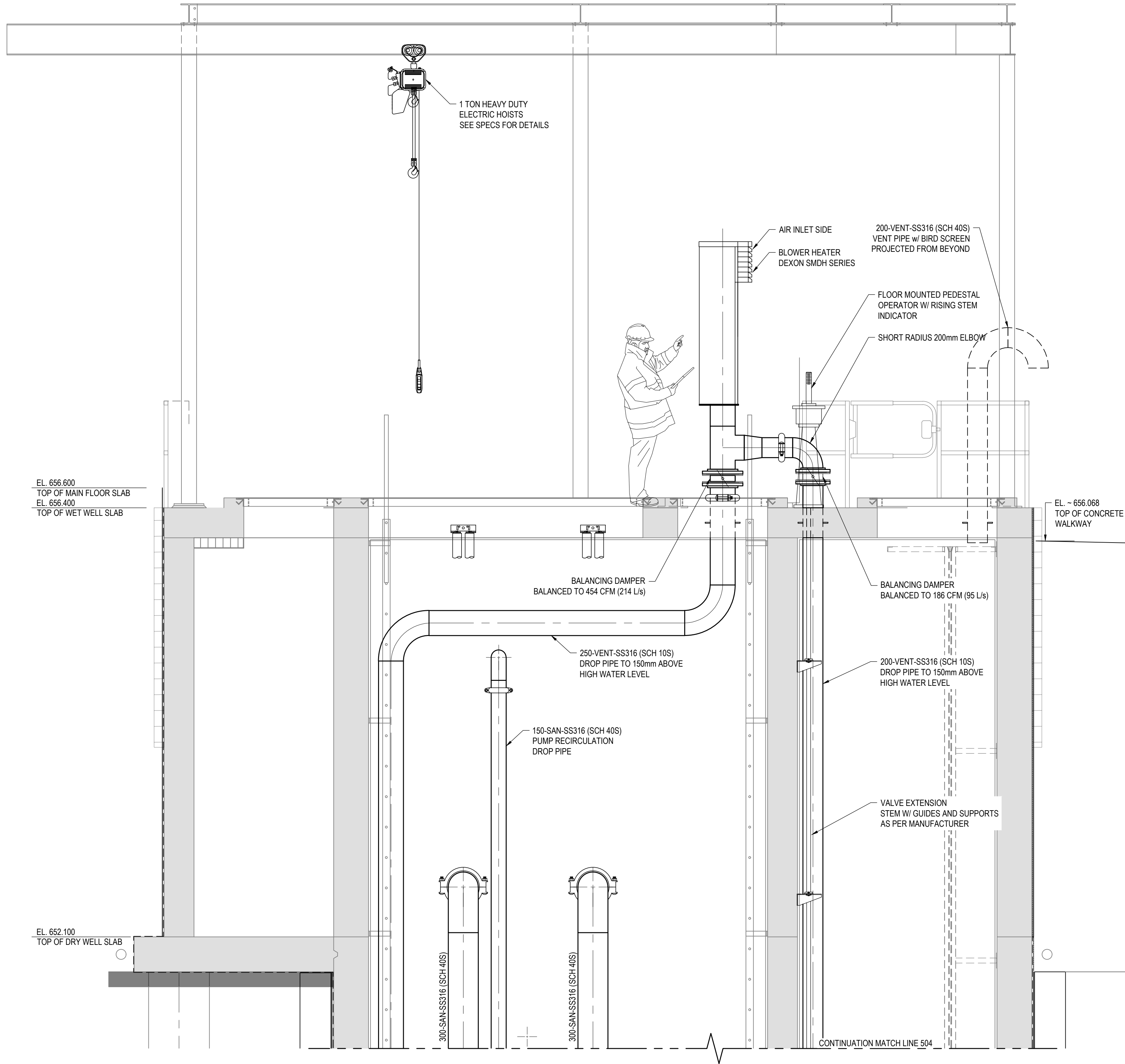
Drawn: AL Design Checked: SM Date: Nov. 23, 2022
Designed: SM Discipline Review: JRK Date: Nov. 23, 2022

PROCESS
DRY WELL AND WET WELL UPPER PLAN

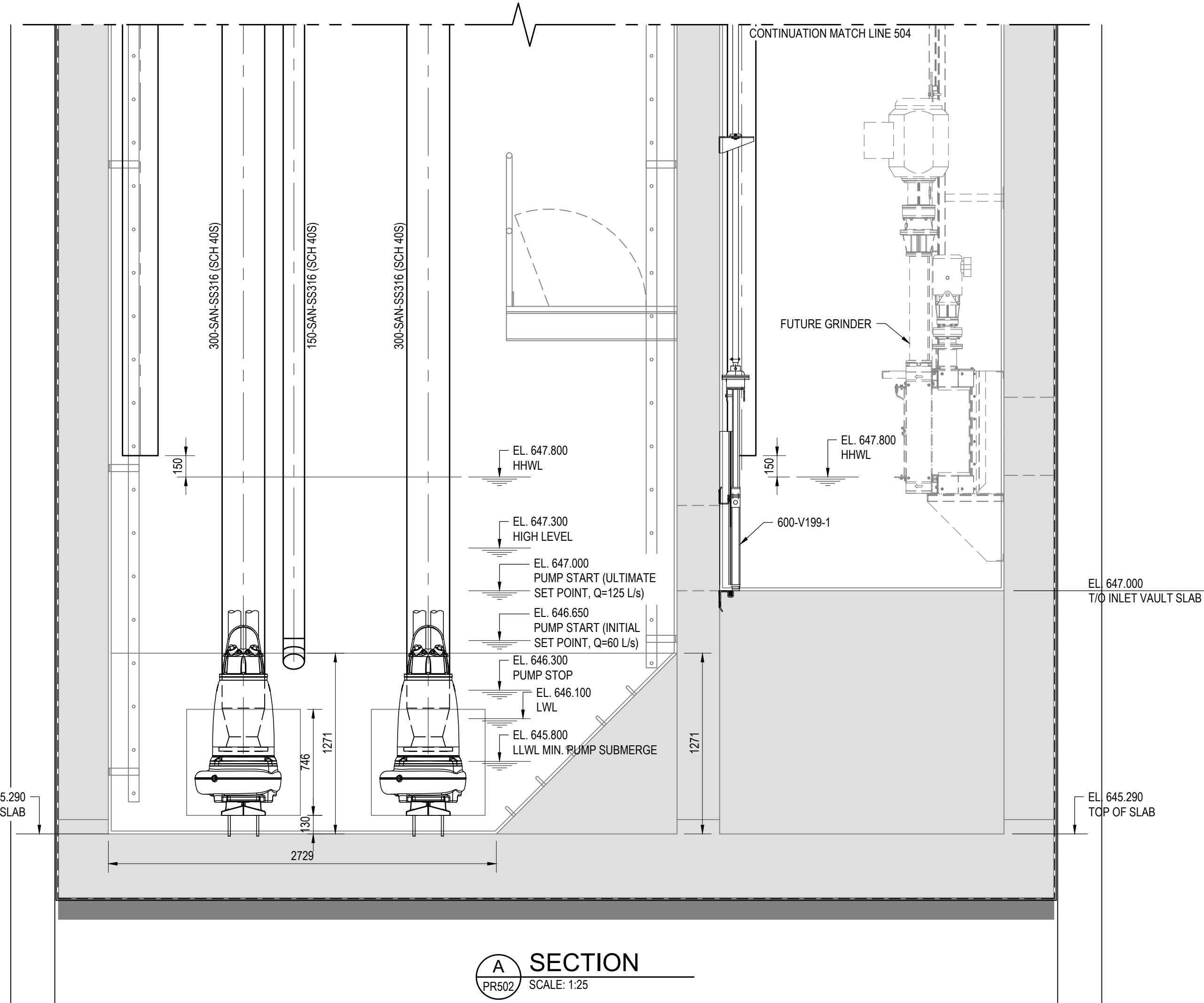
Drawing No.
15719
PR
503
Sheet No.
503

Alan Li, Jan. 4, 23 / G:\Projects\15000\15700\15719_Cambrian_Sanitary_Lift_Station\02_CADD\02_Drafting\2023_DWG\500_Process\15719-PR.dwg

Allen Li Jan. 4, 23 / G:\Projects\15000\15700\15719_Cambrian_Sanitary_Lift_Station\02_CADD\20_Drafting\203_DWG\500_Process\15719-PR.dwg



- NOTES
1. ALL DRAIN CONNECTIONS ARE TO BE 50MM AND PROVIDED WITH A SS 316 MALE CAMLOCK CONNECTION
 2. CONTRACTOR TO SUPPLY ONE 2.5m AND 5.0m LONG DRAIN HOSE WITH COMPATIBLE CAMLOCK FITTING TO CONNECT TO PROCESS PIPING DRAIN CONNECTIONS. CONTRACTOR TO SUPPLY SS WALL BRACKET TO HANG HOSE ON WALL WHEN NOT IN USE, LOCATION OF BRACKET TO BE COORDINATED WITH THE OWNER
 3. FLOW METER TO BE A ZERO DISTANCE FLOW METER WITH REMOTE HEAD TO BE MOUNTED BY THE CONTROL PANEL
 4. ALL VALVES WITH OPERATOR HIGHER THAN 1.5m ABOVE FINISHED FLOOR SHALL HAVE A CHAIN WHEEL OPERATOR
 5. STEM AND OPERATORS FOR KNIFE GATE INSTALLED IN HORIZONTAL PIPING SHALL BE AS PER THE MANUFACTURER'S RECOMMENDATIONS. CONTRACTOR TO CONFIRM PREFERRED ORIENTATION IN SPOOL DRAWING SUBMITTAL. ACCEPTABLE OPTIONS INCLUDES INSTALLED VERTICALLY UP OR DOWN, OR INSTALLED AT A VERTICAL INCLINE OF NOT LESS THAN 30 DEGREES FROM THE HORIZONTAL.



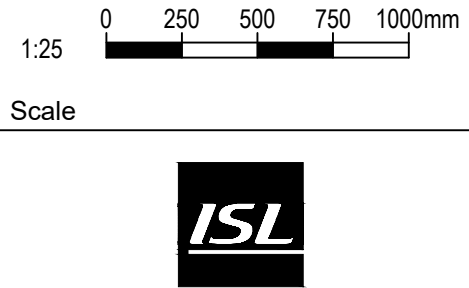
NOTE: THIS DRAWING IS
HALF SCALE WHEN PRINTED
TO 11" x 17" FORMAT

FOR APPROVAL

No.	DESCRIPTION	BY	DATE
2	FOR APPROVAL	SM	Jan. 6, 2023
1	FOR APPROVAL	SM	Nov. 23, 2022



PERMIT TO PRACTICE
ISL Engineering and Land Services Ltd.
RM Signature: *Stephen A. McCool*
RM APEGA ID: 94184
Date: 2023-01-06
PERMIT NUMBER: P 4741
The Association of Professional Engineers
and Geoscientists of Alberta



MATTAMY (SHERWOOD PARK) LTD

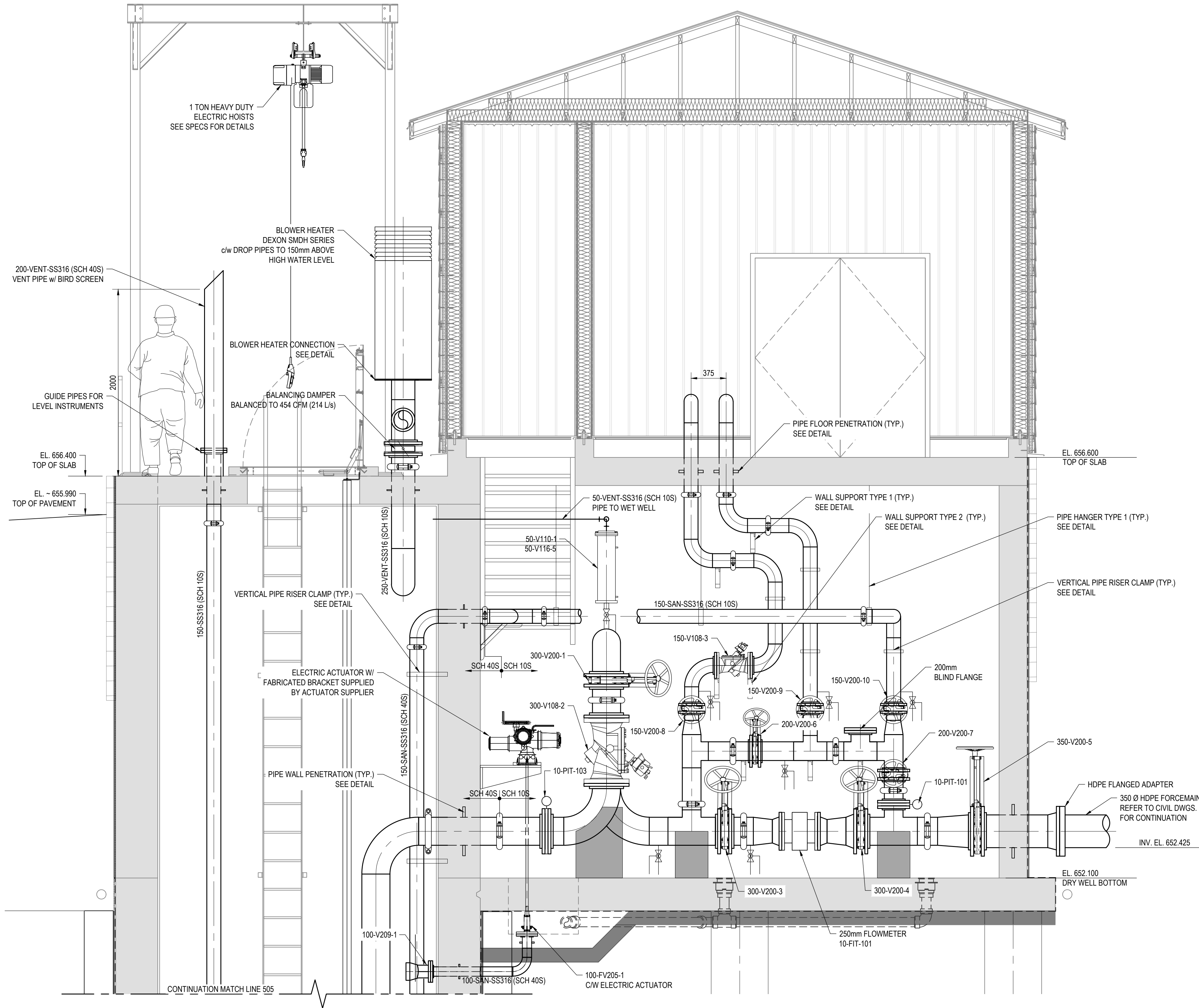
HEARTHSTONE SANITARY
LIFT STATION

Drawn: AL	Design Checked: SM	Date: Nov. 23, 2022
Designed: SM	Discipline Review: JRK	Date: Nov. 23, 2022

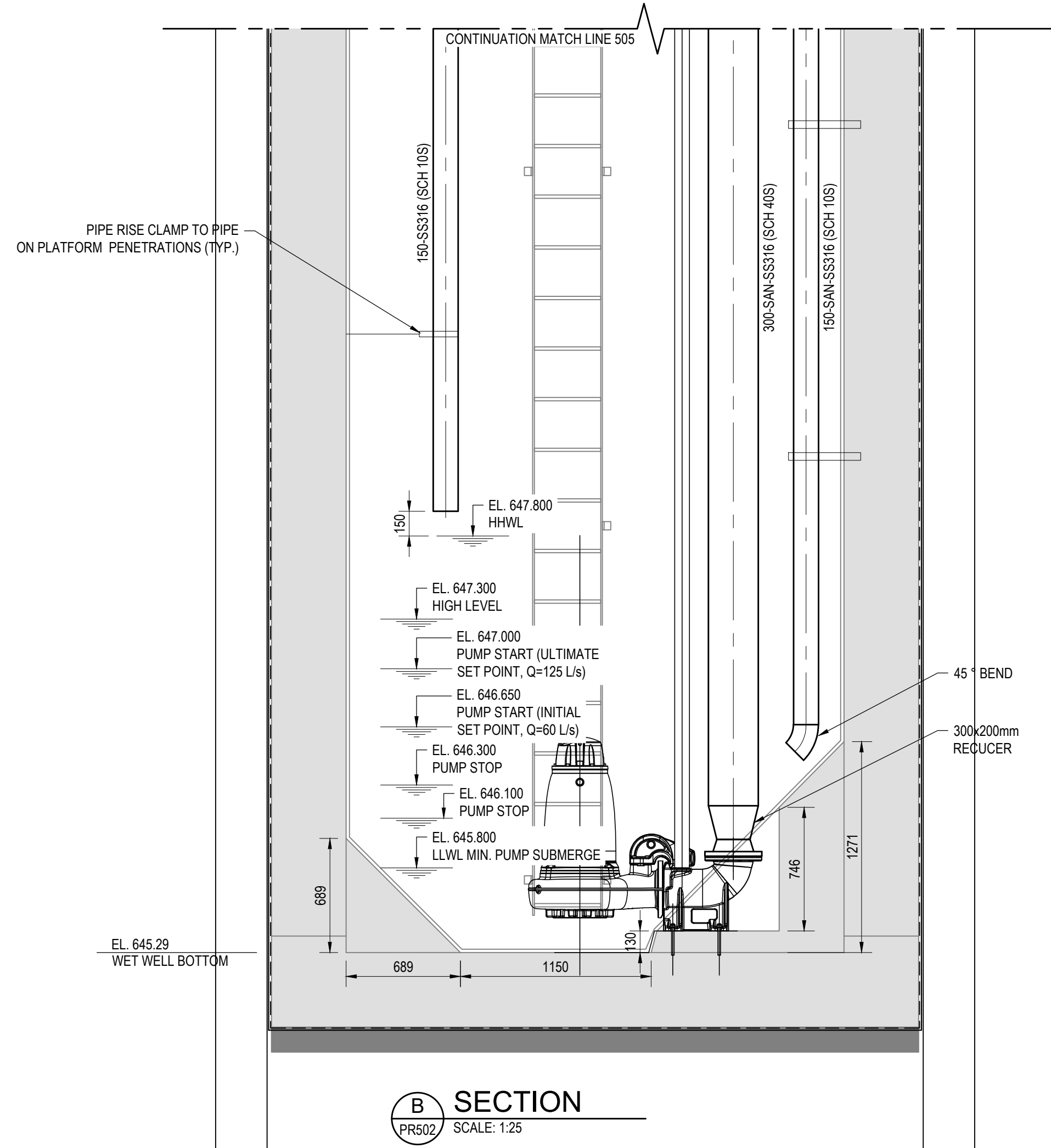
PROCESS
SECTION A

Drawing No.
15719
PR
504
Sheet No.
504

Allen Li Jan. 4, 23 / G:\Projects\150001\15001\15719_Cambrian_Sanitary_Lift_Station\02_CADD\20_Drafting\203_DWG500_Process\15719-PR.dwg



- NOTES
1. ALL DRAIN CONNECTIONS ARE TO BE 50MM AND PROVIDED WITH A SS 316 MALE CAMLOCK CONNECTION
 2. CONTRACTOR TO SUPPLY ONE 2.5m AND 5.0m LONG DRAIN HOSE WITH COMPATIBLE CAMLOCK FITTING TO CONNECT TO PROCESS PIPING DRAIN CONNECTIONS. CONTRACTOR TO SUPPLY SS WALL BRACKET TO HANG HOSE ON WALL WHEN NOT IN USE, LOCATION OF BRACKET TO BE COORDINATED WITH THE OWNER
 3. FLOW METER TO BE A ZERO DISTANCE FLOW METER WITH REMOTE HEAD TO BE MOUNTED BY THE CONTROL PANEL
 4. ALL VALVES WITH OPERATOR HIGHER THAN 1.5m ABOVE FINISHED FLOOR SHALL HAVE A CHAIN WHEEL OPERATOR
 5. STEM AND OPERATORS FOR KNIFE GATE INSTALLED IN HORIZONTAL PIPING SHALL BE AS PER THE MANUFACTURER'S RECOMMENDATIONS. CONTRACTOR TO CONFIRM PREFERRED ORIENTATION IN SPOOL DRAWING SUBMITTAL. ACCEPTABLE OPTIONS INCLUDES INSTALLED VERTICALLY UP OR DOWN, OR INSTALLED AT A VERTICAL INCLINE OF NOT LESS THAN 30 DEGREES FROM THE HORIZONTAL.

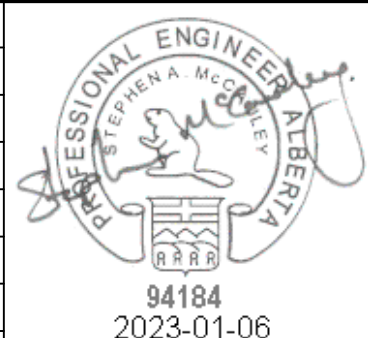


NOTE: THIS DRAWING IS HALF SCALE WHEN PRINTED TO 11" x 17" FORMAT

FOR APPROVAL

No.	DESCRIPTION	BY	DATE
2	FOR APPROVAL	SM	Jan. 6, 2023
1	FOR APPROVAL	SM	Nov. 23, 2022

REVISIONS



PERMIT TO PRACTICE

ISL Engineering and Land Services Ltd.

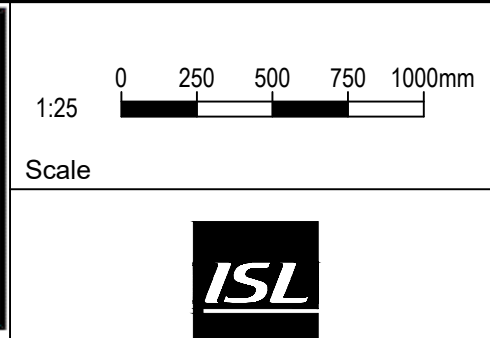
RM Signature: *Stephen A. McCreedy*

RM APEGA ID: 94184

Date: 2023-01-06

PERMIT NUMBER: P 4741

The Association of Professional Engineers and Geoscientists of Alberta



MATTAMY (SHERWOOD PARK) LTD

HEARTHSTONE SANITARY LIFT STATION

Drawn: AL	Design Checked: SM	Date: Nov. 23, 2022
Designed: SM	Discipline Review: JRK	Date: Nov. 23, 2022

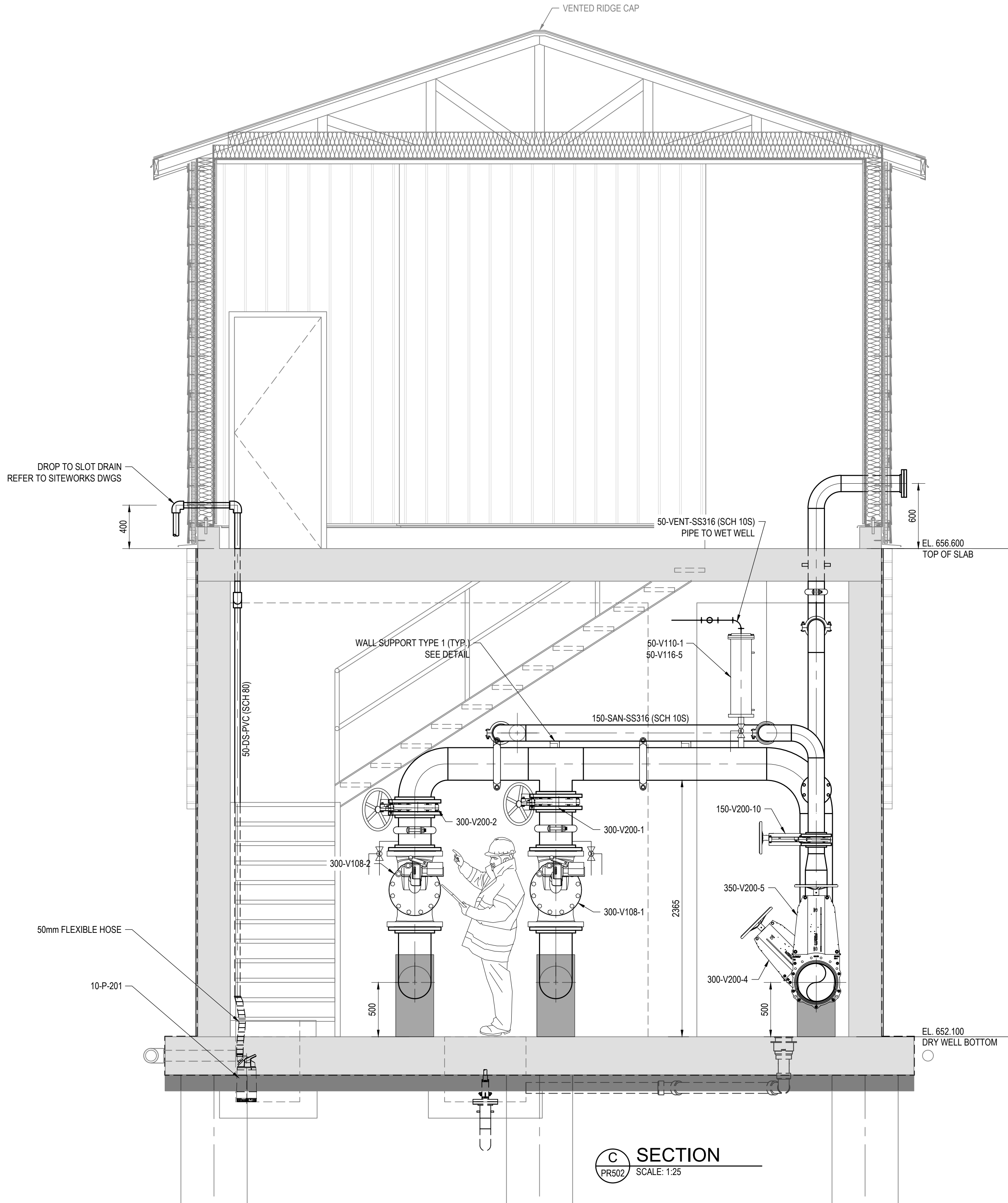
PROCESS SECTION B

Drawing No. 15719 PR 505

Sheet No. 505

NOTES

1. ALL DRAIN CONNECTIONS ARE TO BE 50MM AND PROVIDED WITH A SS 316 MALE CAMLOCK CONNECTION
2. CONTRACTOR TO SUPPLY ONE 2.5m AND 5.0m LONG DRAIN HOSE WITH COMPATIBLE CAMLOCK FITTING TO CONNECT TO PROCESS PIPING DRAIN CONNECTIONS. CONTRACTOR TO SUPPLY SS WALL BRACKET TO HANG HOSE ON WALL WHEN NOT IN USE, LOCATION OF BRACKET TO BE COORDINATED WITH THE OWNER
3. FLOW METER TO BE A ZERO DISTANCE FLOW METER WITH REMOTE HEAD TO BE MOUNTED BY THE CONTROL PANEL
4. ALL VALVES WITH OPERATOR HIGHER THAN 1.5m ABOVE FINISHED FLOOR SHALL HAVE A CHAIN WHEEL OPERATOR
5. STEM AND OPERATORS FOR KNIFE GATE INSTALLED IN HORIZONTAL PIPING SHALL BE AS PER THE MANUFACTURER'S RECOMMENDATIONS. CONTRACTOR TO CONFIRM PREFERRED ORIENTATION IN SPOOL DRAWING SUBMITTAL. ACCEPTABLE OPTIONS INCLUDES INSTALLED VERTICALLY UP OR DOWN, OR INSTALLED AT A VERTICAL INCLINE OF NOT LESS THAN 30 DEGREES FROM THE HORIZONTAL.

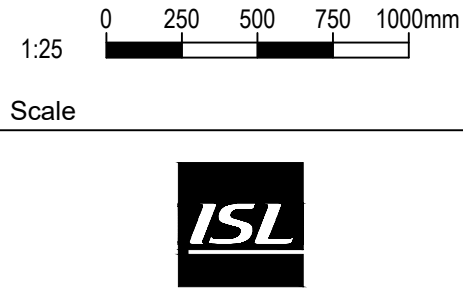
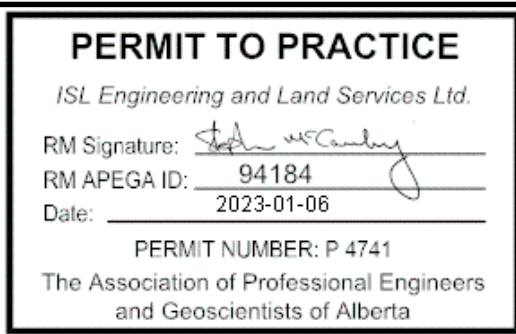


NOTE: THIS DRAWING IS
HALF SCALE WHEN PRINTED
TO 11" x 17" FORMAT

FOR APPROVAL

No.	DESCRIPTION	BY	DATE
2	FOR APPROVAL	SM	Jan. 6, 2023
1	FOR APPROVAL	SM	Nov. 23, 2022

REVISIONS



MATTAMY (SHERWOOD PARK) LTD

HEARTHSTONE SANITARY
LIFT STATION

Drawn: AL Design Checked: SM Date: Nov. 23, 2022
Designed: SM Discipline Review: JRK Date: Nov. 23, 2022

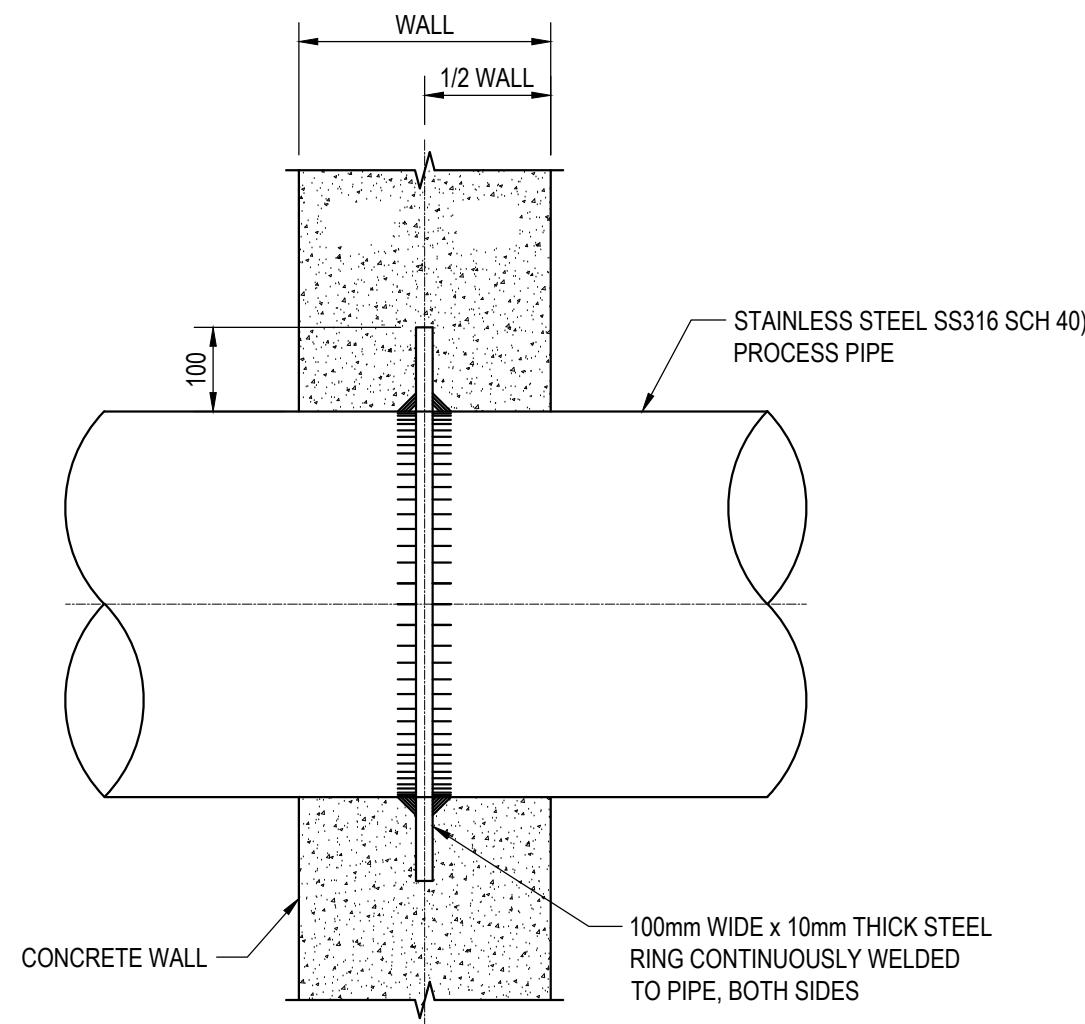
PROCESS
SECTION C

Drawing No.

15719
PR
506

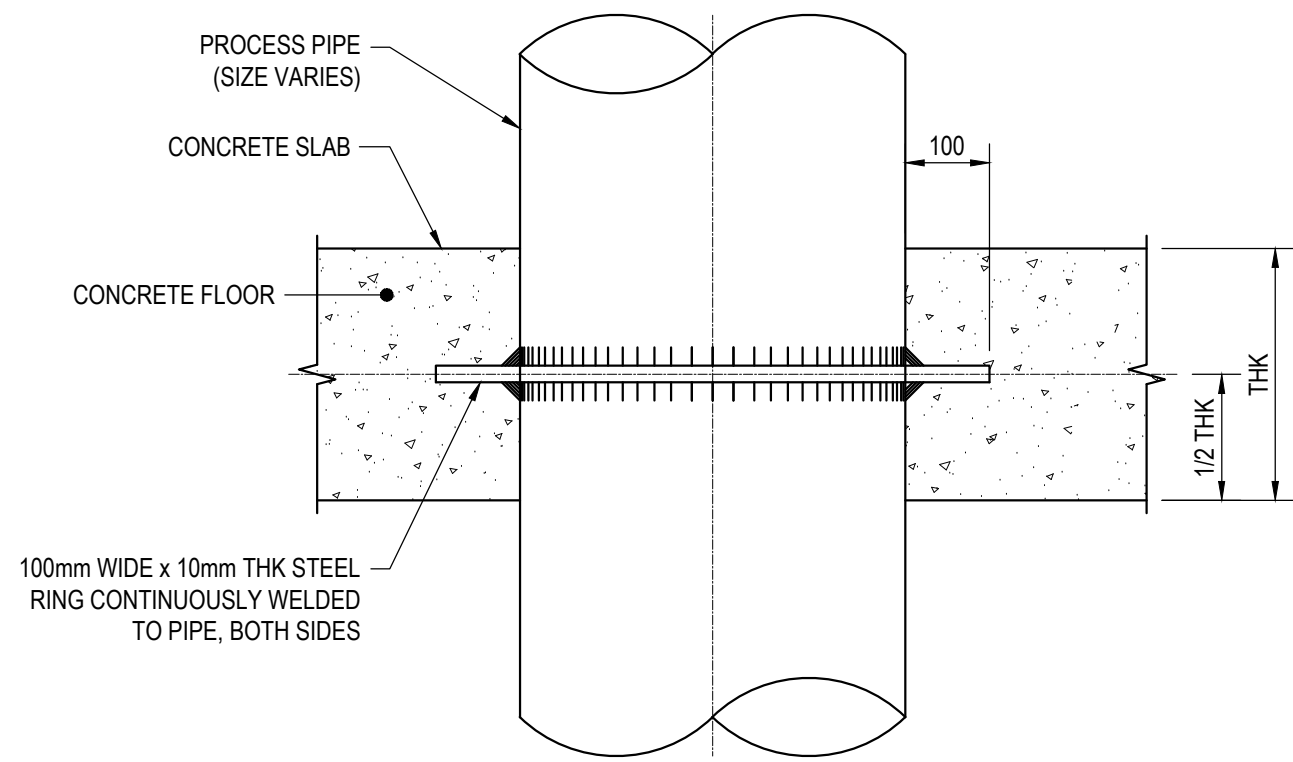
Sheet No.
506

Allen Li | Jan. 4, 23 | G:\Projects\15000157001570015719_Cambrian_Sanitary_Lift_Station\02_CADD\20_Drafting\203_DWG\500_Process\15719-PR_SDs.dwg



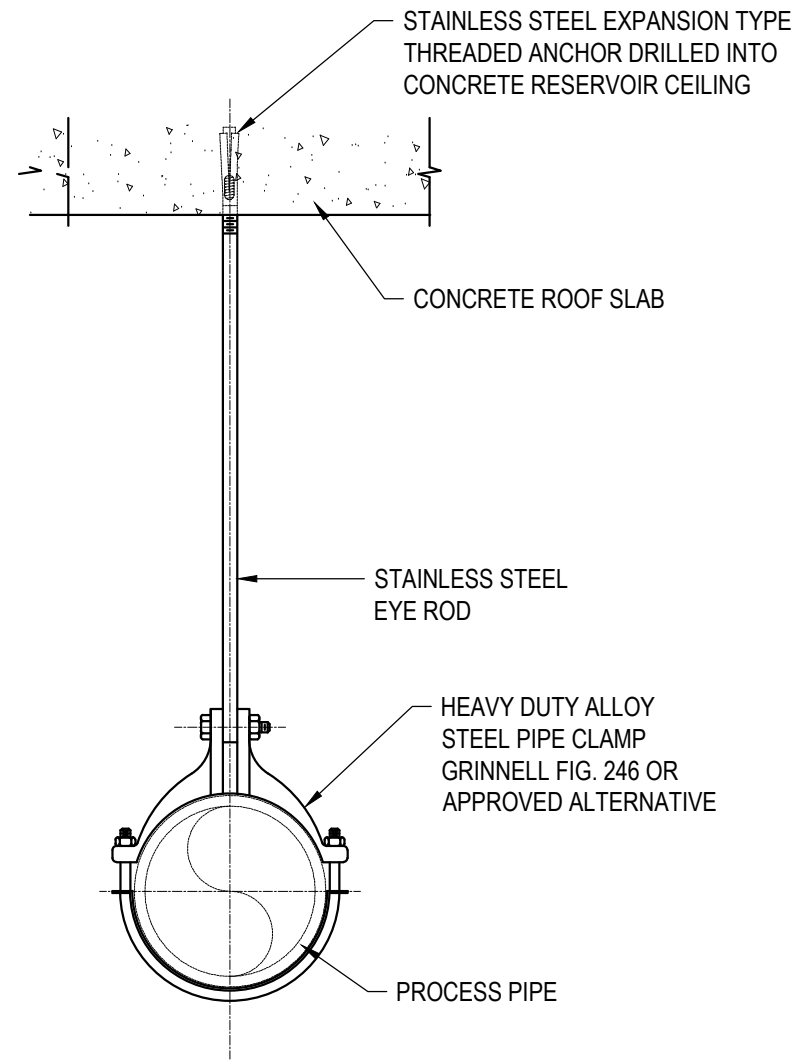
NOTES:
ALL PIPES CAST IN WALLS TO BE SCH 40

PIPE WALL PENETRATION DETAIL
N.T.S.

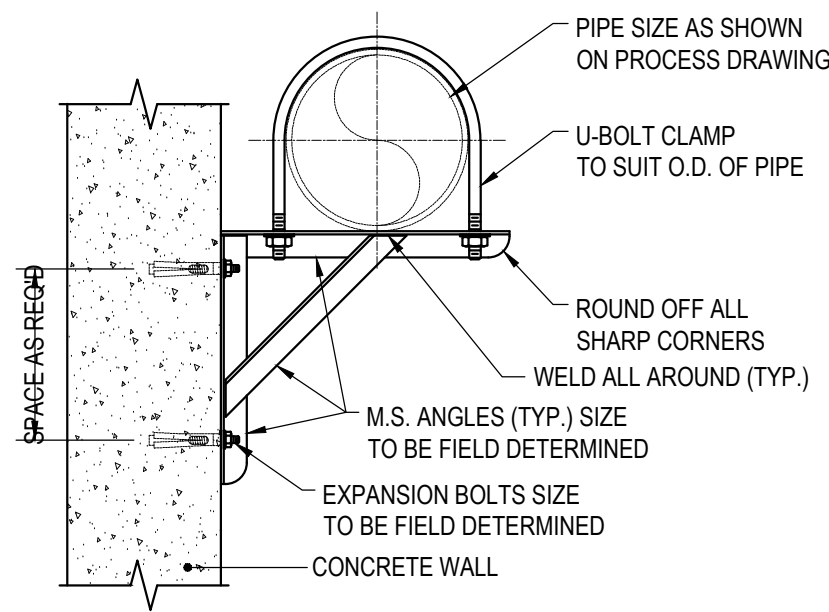
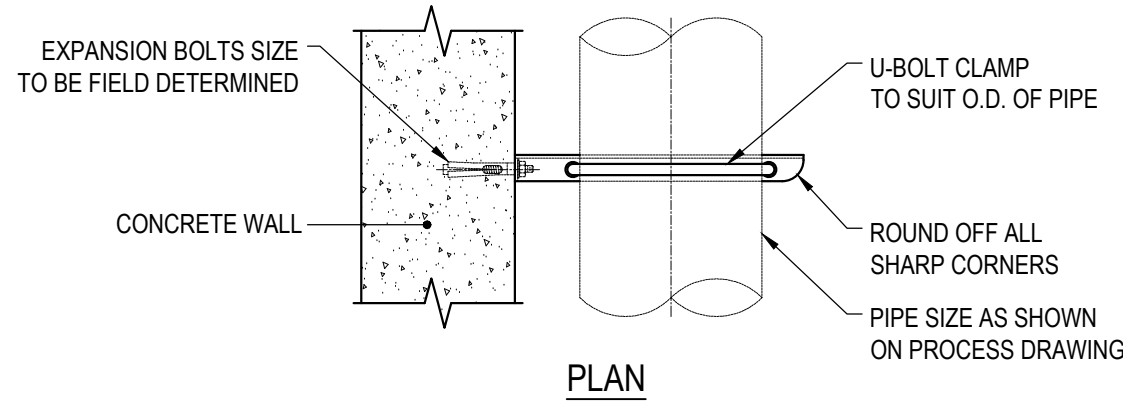


NOTES:
ALL PIPES CAST IN FLOORS TO BE SCH 40

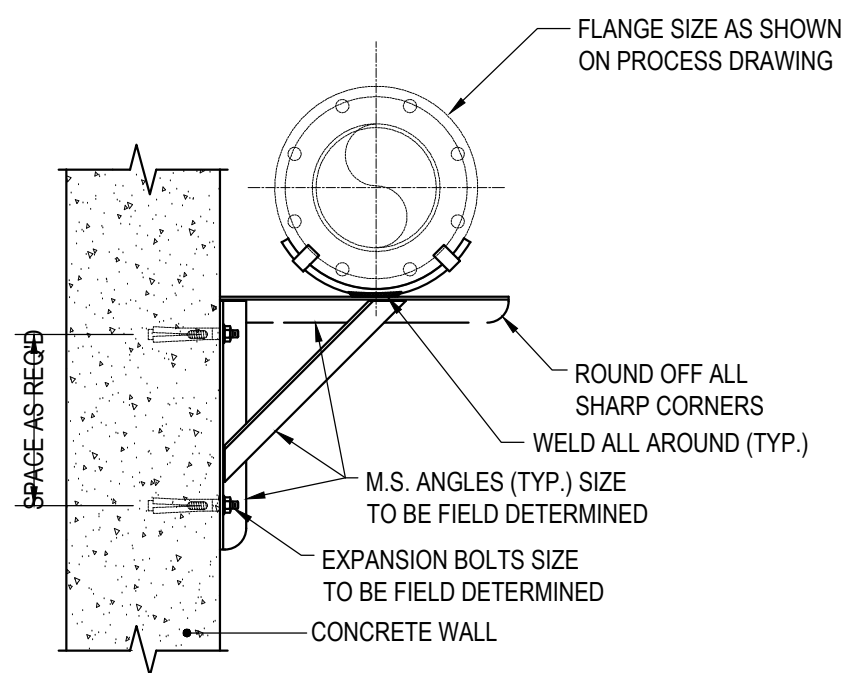
PIPE FLOOR PENETRATION DETAIL
N.T.S.



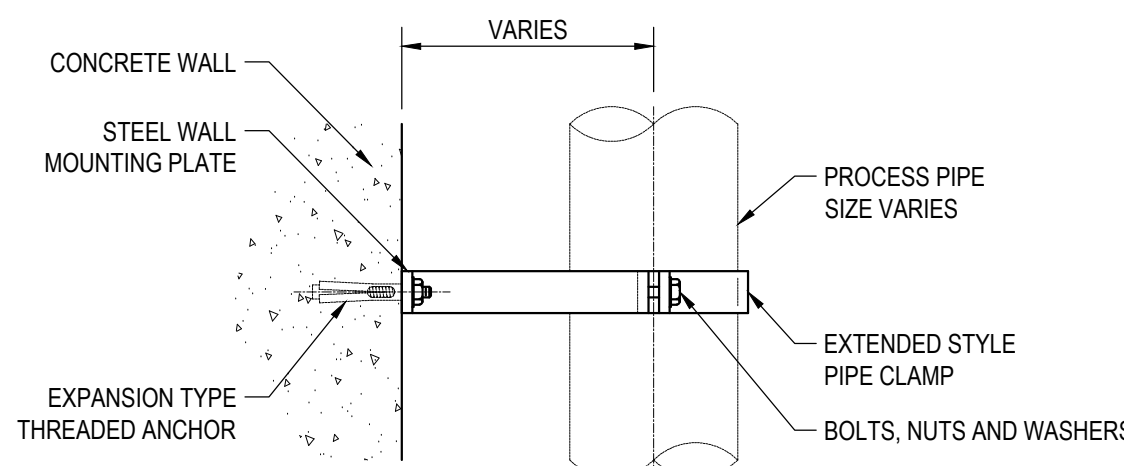
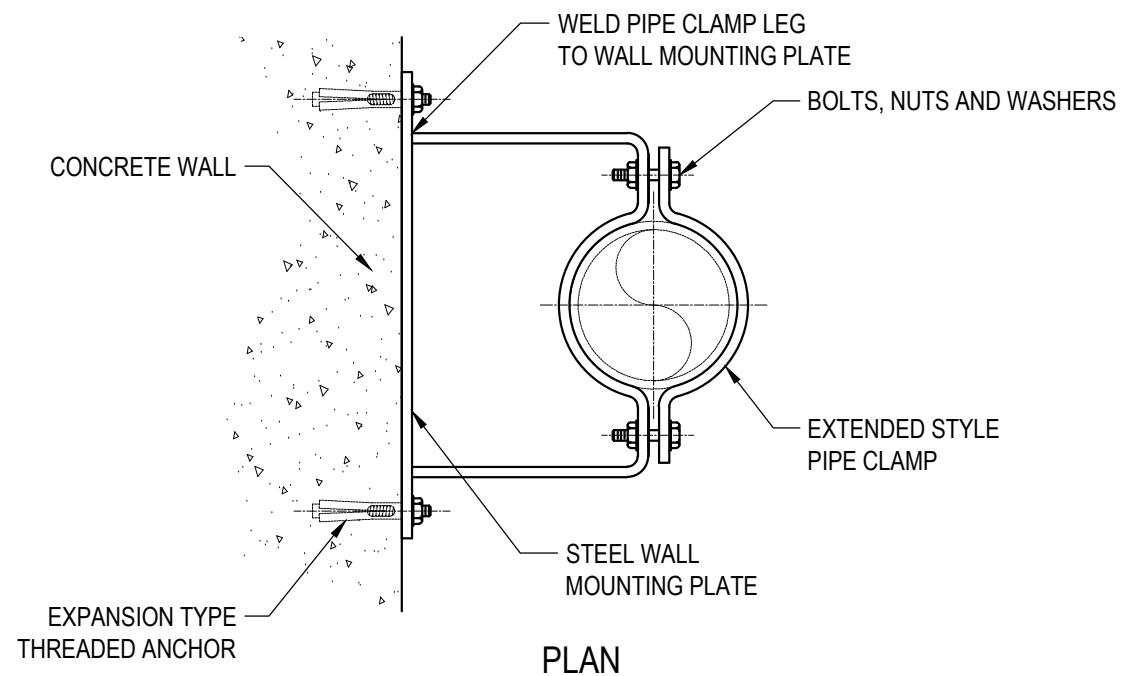
PIPE HANGER TYPE 1 DETAIL
N.T.S.



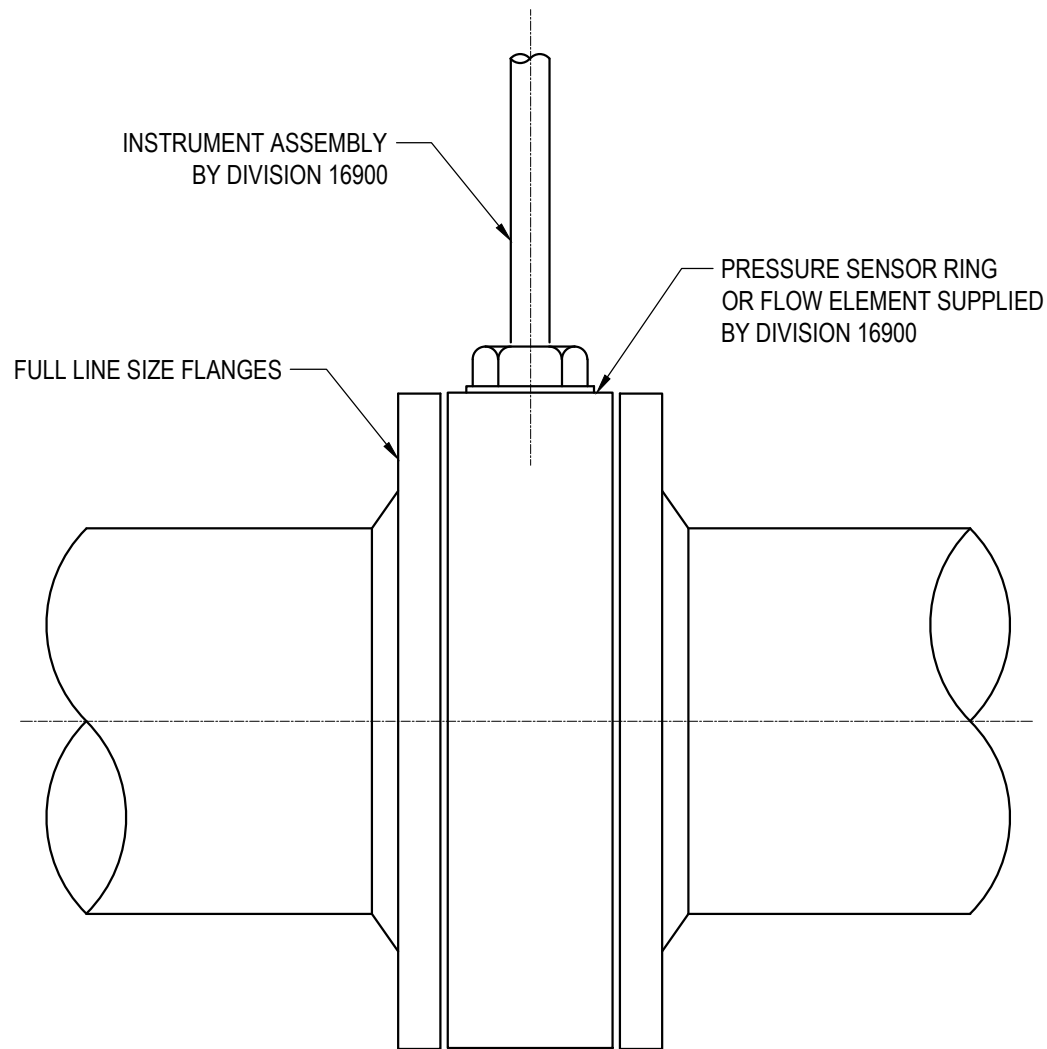
WALL PIPE SUPPORT TYPE 1 DETAIL
N.T.S.



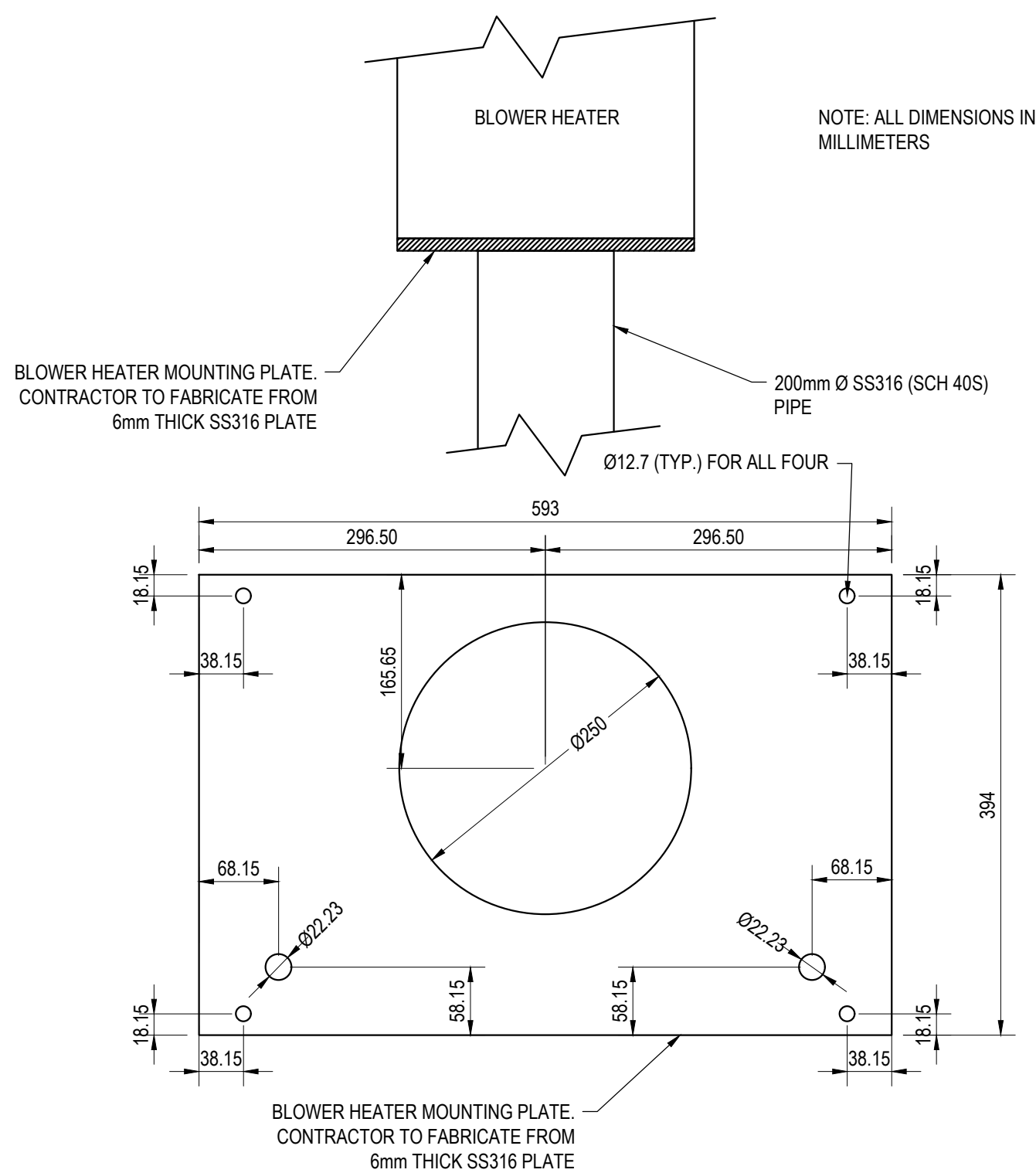
WALL PIPE SUPPORT TYPE 2 DETAIL
N.T.S.



VERTICAL PIPE RISER CLAMP DETAIL
N.T.S.



PRESSURE / FLOW INLINE ELEMENTS DETAIL
N.T.S.

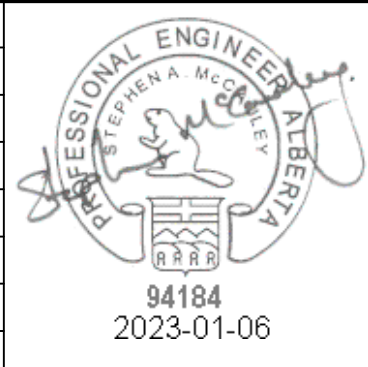


BLOWER HEATER MOUNTING PLATE
N.T.S.

NOTE: THIS DRAWING IS
HALF SCALE WHEN PRINTED
TO 11" x 17" FORMAT

FOR APPROVAL

No.	DESCRIPTION	BY	DATE
2	FOR APPROVAL	SM	Jan. 6, 2023
1	FOR APPROVAL	SM	Nov. 23, 2022



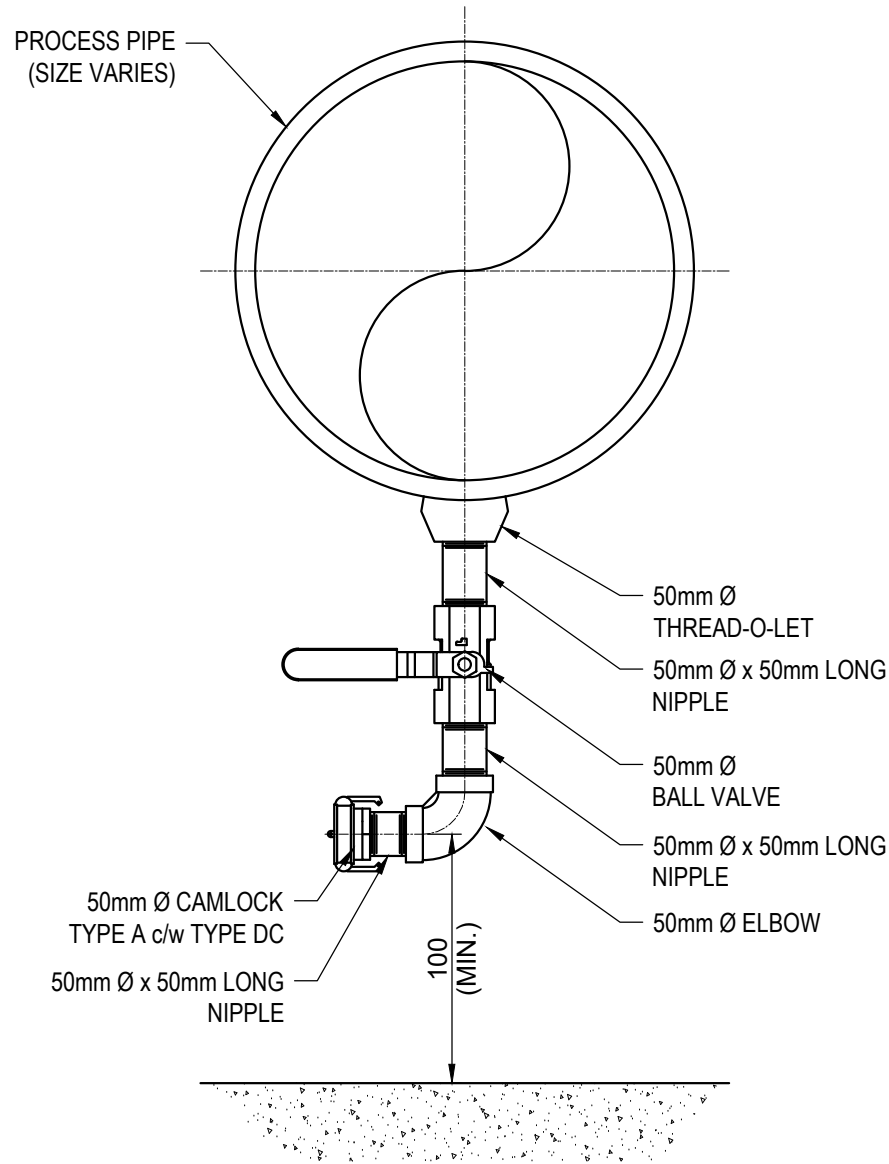
PERMIT TO PRACTICE
ISL Engineering and Land Services Ltd.
RM Signature: *Stephen A. McCord*
RM APEGA ID: 94184
Date: 2023-01-06
PERMIT NUMBER: P 4741
The Association of Professional Engineers
and Geoscientists of Alberta

N.T.S.
Scale
ISL

MATTAMY (SHERWOOD PARK) LTD
**HEARTHSTONE SANITARY
LIFT STATION**
Drawn: AL Design Checked: SM Date: Nov. 23, 2022
Designed: SM Discipline Review: JRK Date: Nov. 23, 2022

**PROCESS
STANDARD DETAILS I**
Drawing No.
**15719
PR
507**
Sheet No.
507

Alan Li | Jan. 4, 23 | G:\Projects\1500015700\15719_Cambrian_Sanitary_Lift_Station\02_CADD\02_Drafting\2023_DWG\500_Process\15719-PRL_SDs.dwg



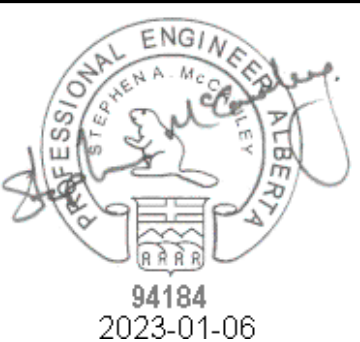
- NOTES:
- 1. WHERE PIPEWORK ELEVATED BEND TO CREATE HORIZONTAL CONNECTION CAN BE ELIMINATED.
 - 2. FITTINGS AND VALVES TO BE THE SAME MATERIALS AS THE MAIN PROCESS PIPEWORK.

DRAIN CONNECTION DETAIL
N.T.S.

NOTE: THIS DRAWING IS
HALF SCALE WHEN PRINTED
TO 11" x 17" FORMAT

FOR APPROVAL

2	FOR APPROVAL	SM	Jan. 6, 2023
1	FOR APPROVAL	SM	Nov. 23, 2022
No.	DESCRIPTION	BY	DATE
REVISIONS			



PERMIT TO PRACTICE

ISL Engineering and Land Services Ltd.

RM Signature:

RM APEGA ID: 94184

Date: 2023-01-06

PERMIT NUMBER: P 4741

The Association of Professional Engineers
and Geoscientists of Alberta

N.T.S

Scale

MATTAMY (SHERWOOD PARK) LTD		
HEARTHSTONE SANITARY LIFT STATION		
Drawn: AL	Design Checked: SM	Date: Nov. 23, 2022
Designed: SM	Discipline Review: JRK	Date: Nov. 23, 2022

PROCESS
STANDARD DETAILS II

Drawing No.
15719
PR
508
Sheet No.
508